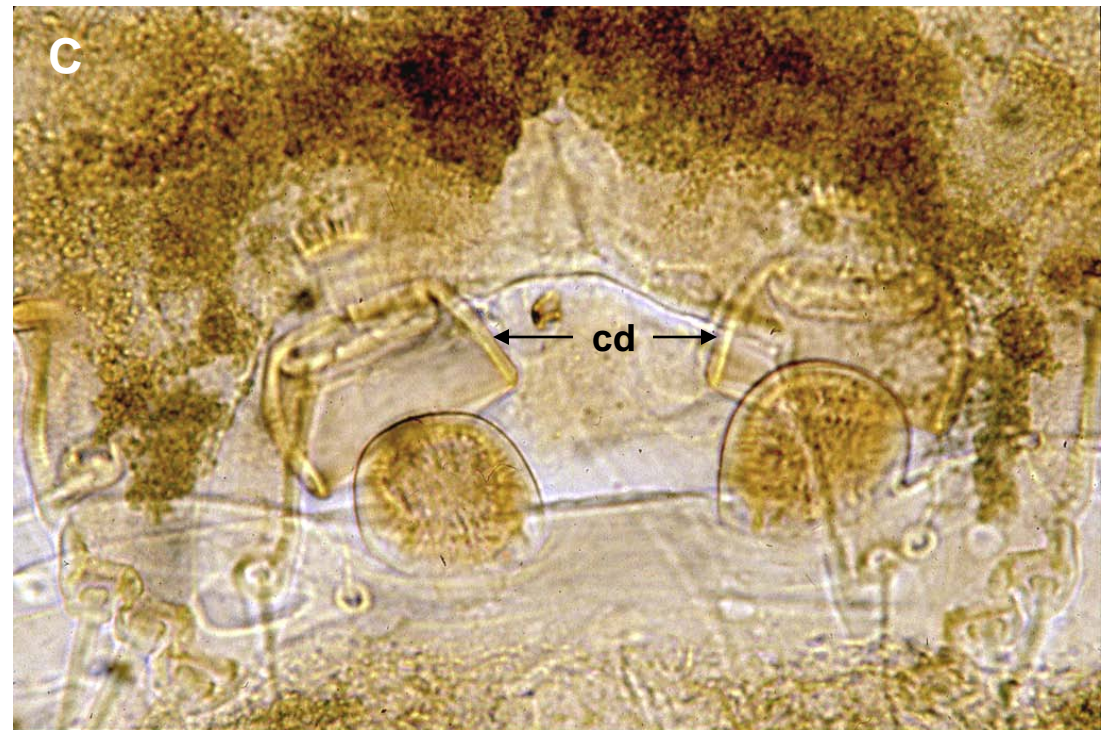
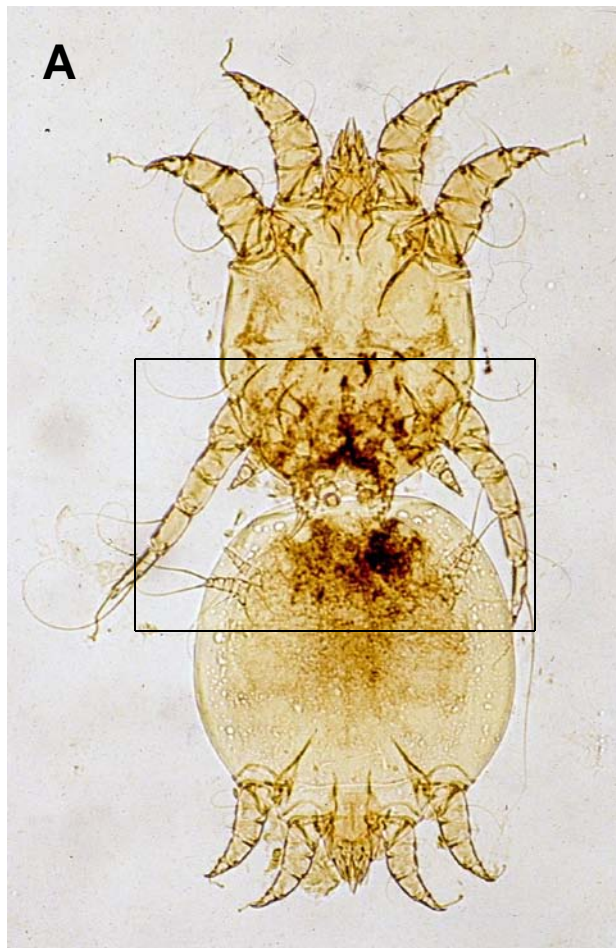


*Psoroptes* sp.; en copula, male (left) and female (right). Enlarged third pair of legs (arrow) is a sexually dimorphic character of this genus.



*Psoroptes* sp.; en copula (box  
in A enlarged in B & C).

Legend: cd, male copulatory  
disk; f3, 3<sup>rd</sup> leg of female; m3,  
3<sup>rd</sup> leg of male.



*Psoroptes* sp. Box in A enlarged in B.  
Legend: c, caruncle; p, pedicle (segmented in this genus).

